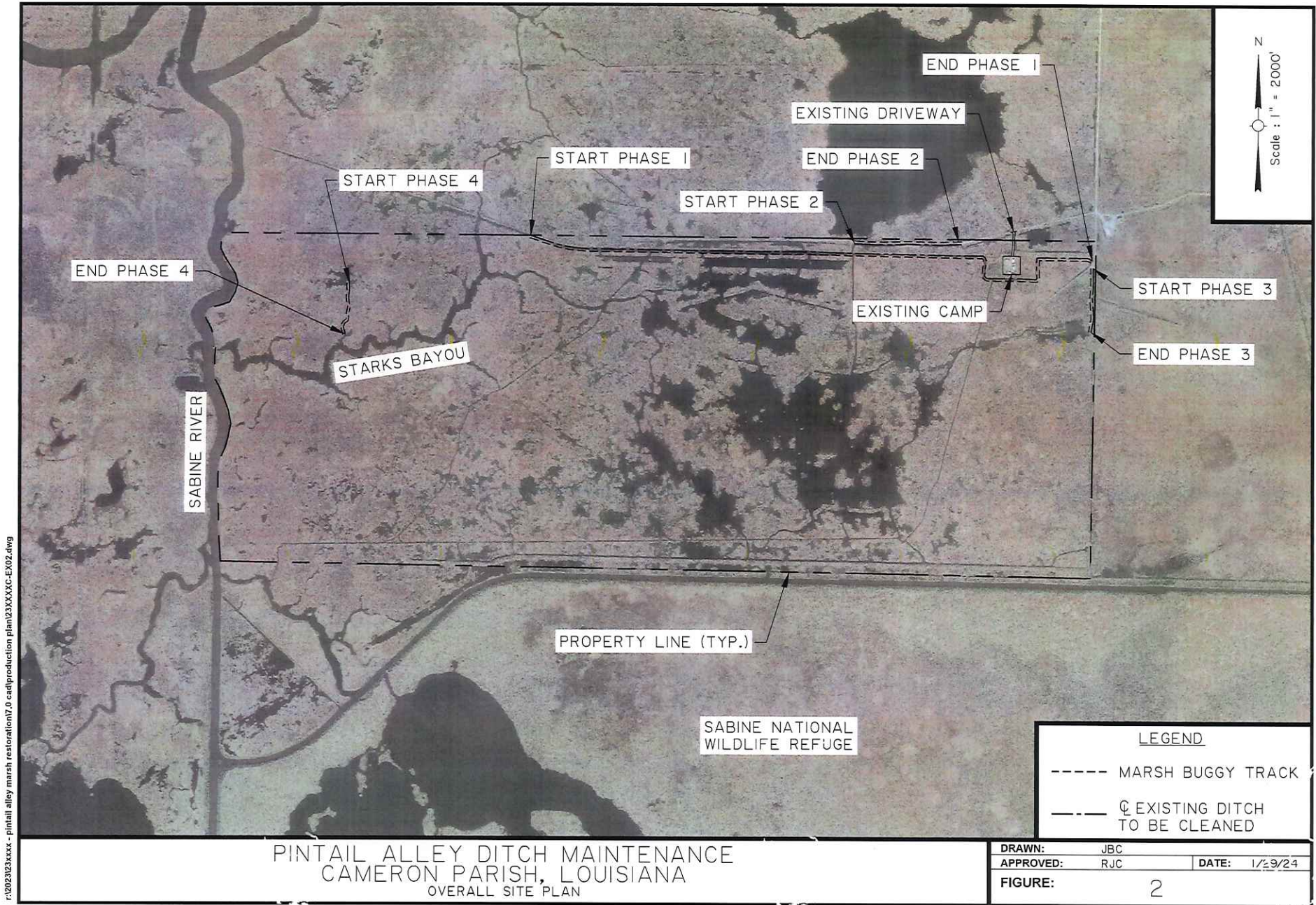
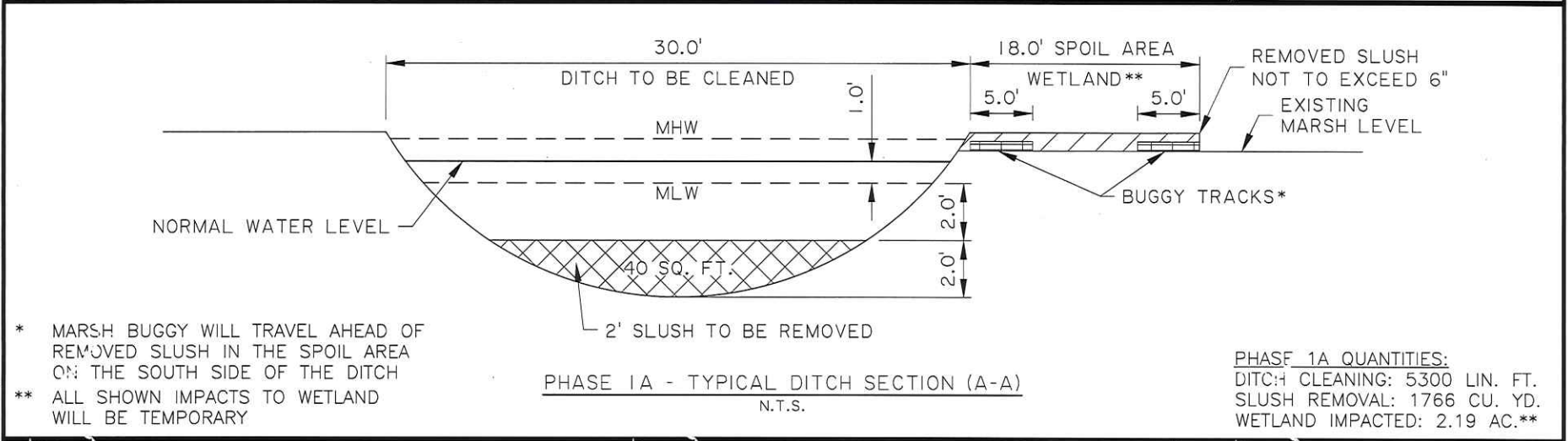
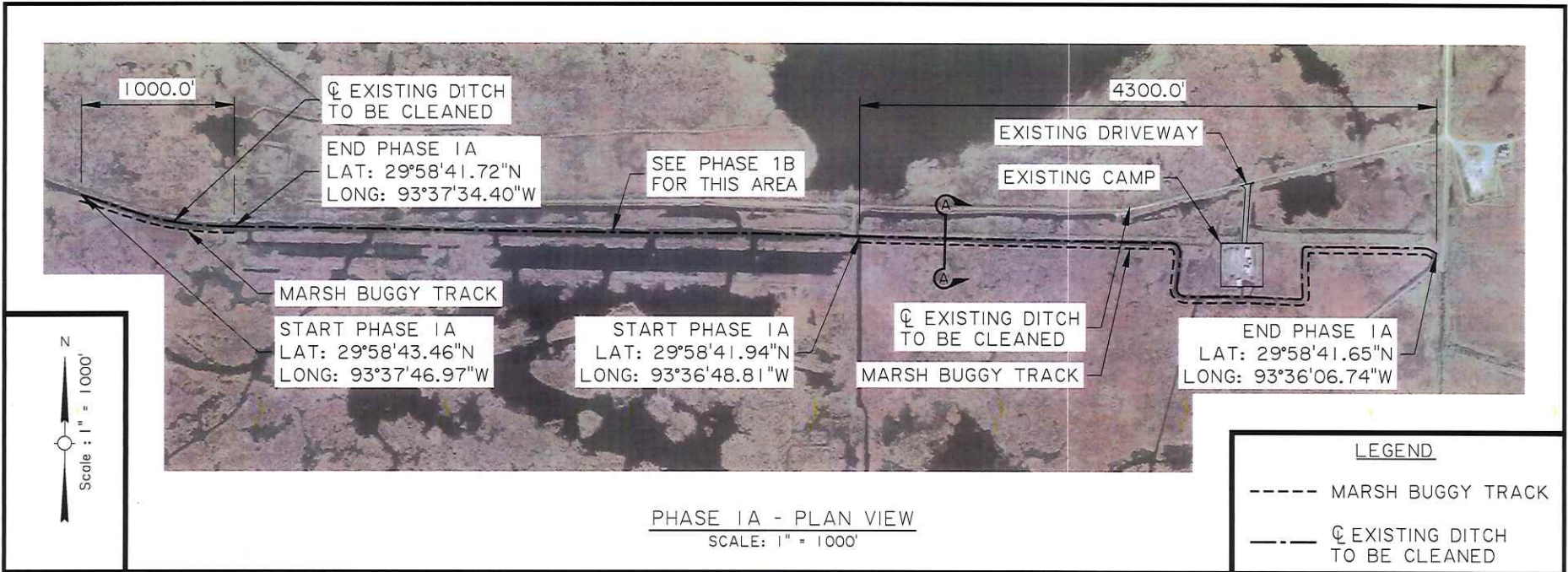


r:\2023\23xxxx - pintail alley marsh restoration\7.0 cad\production\plan\23XXXX-EX01.dwg



r:\02023023xxxx - pintail alley marsh restoration\7.0 cad\production plan\23XXXXC-EX02.dwg

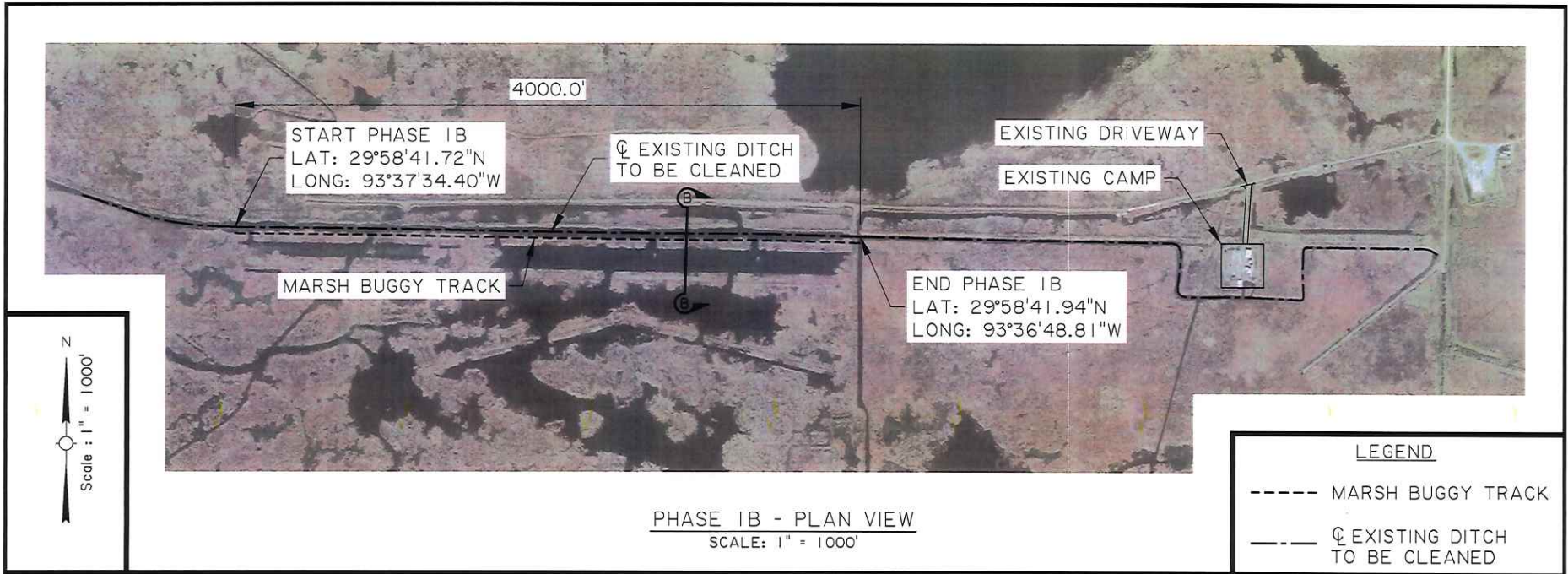


PHASE 1A QUANTITIES:
 DITCH CLEANING: 5300 LIN. FT.
 SLUSH REMOVAL: 1766 CU. YD.
 WETLAND IMPACTED: 2.19 AC.**

r:\2023\23xxxx - pintail alley marsh restoration\7.0 cad\production plan\23XXXX-EX03a.dwg

PINTAIL ALLEY DITCH MAINTENANCE
CAMERON PARISH, LOUISIANA
 PHASE 1A - SITE PLAN

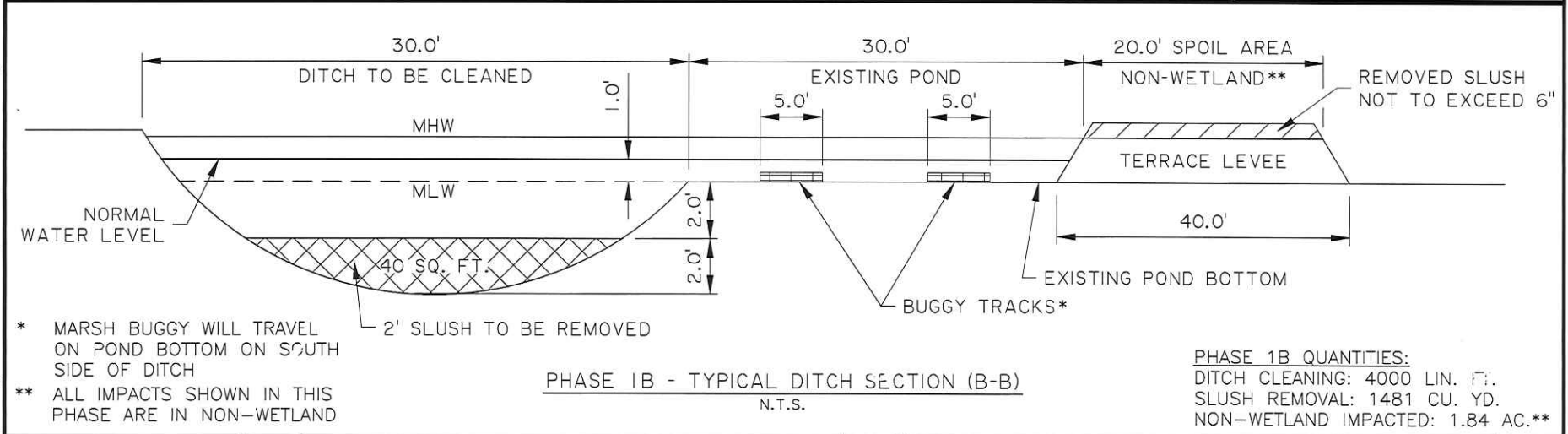
DRAWN:	JBC	DATE:	1/29/24
APPROVED:	RJC		
FIGURE:	3A		



PHASE 1B - PLAN VIEW
SCALE: 1" = 1000'

LEGEND

- MARSH BUGGY TRACK
- ☉ EXISTING DITCH TO BE CLEANED



PHASE 1B - TYPICAL DITCH SECTION (B-B)
N.T.S.

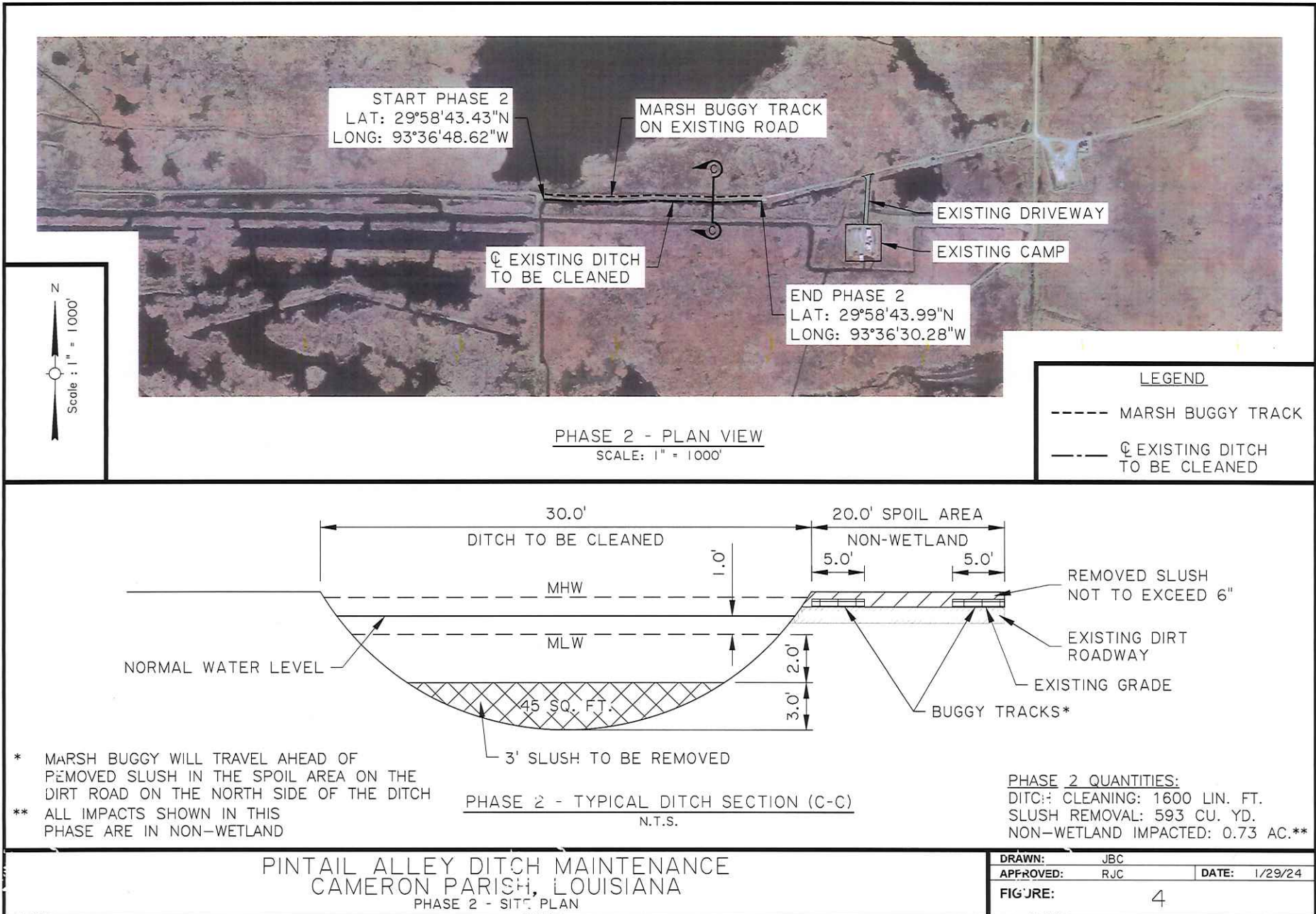
PHASE 1B QUANTITIES:
DITCH CLEANING: 4000 LIN. FT.
SLUSH REMOVAL: 1481 CU. YD.
NON-WETLAND IMPACTED: 1.84 AC.**

* MARSH BUGGY WILL TRAVEL ON POND BOTTOM ON SOUTH SIDE OF DITCH
** ALL IMPACTS SHOWN IN THIS PHASE ARE IN NON-WETLAND

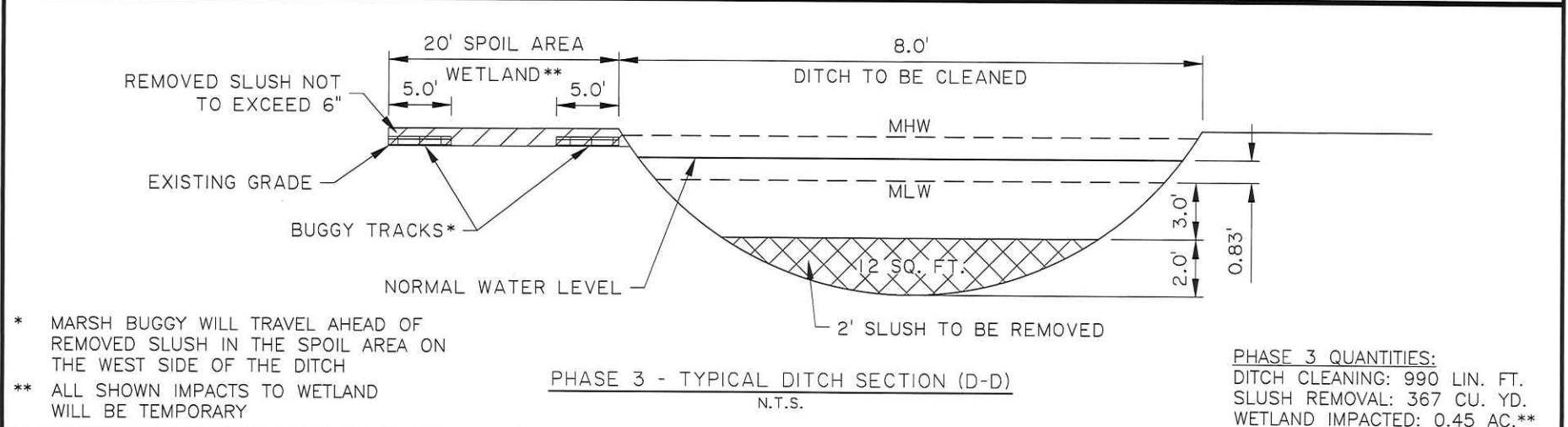
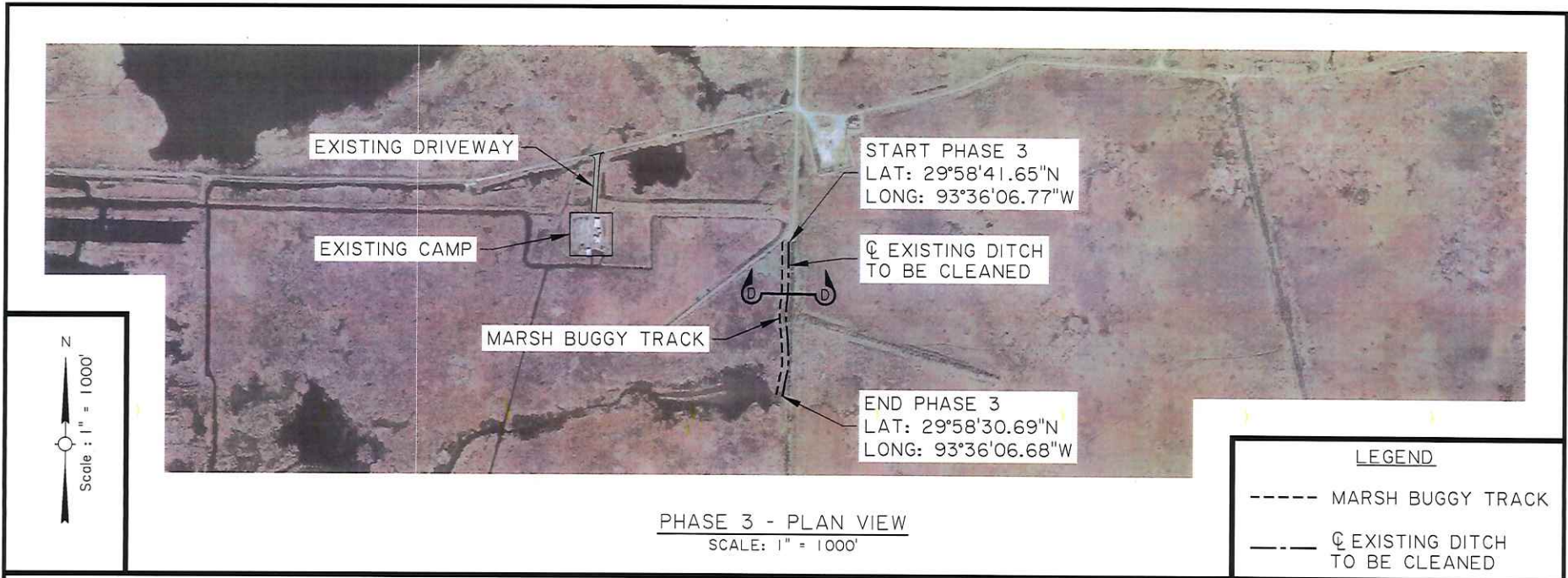
PINTAIL ALLEY DITCH MAINTENANCE
CAMERON PARISH, LOUISIANA
PHASE 1B - SITE PLAN

DRAWN:	JBC	DATE:	1/29/24
APPROVED:	RJC		
FIGURE:	3B		

R:\02023\23xxx - pintail alley marsh restoration\7.0 cad\production\plan\23xxx-EX03b.dwg



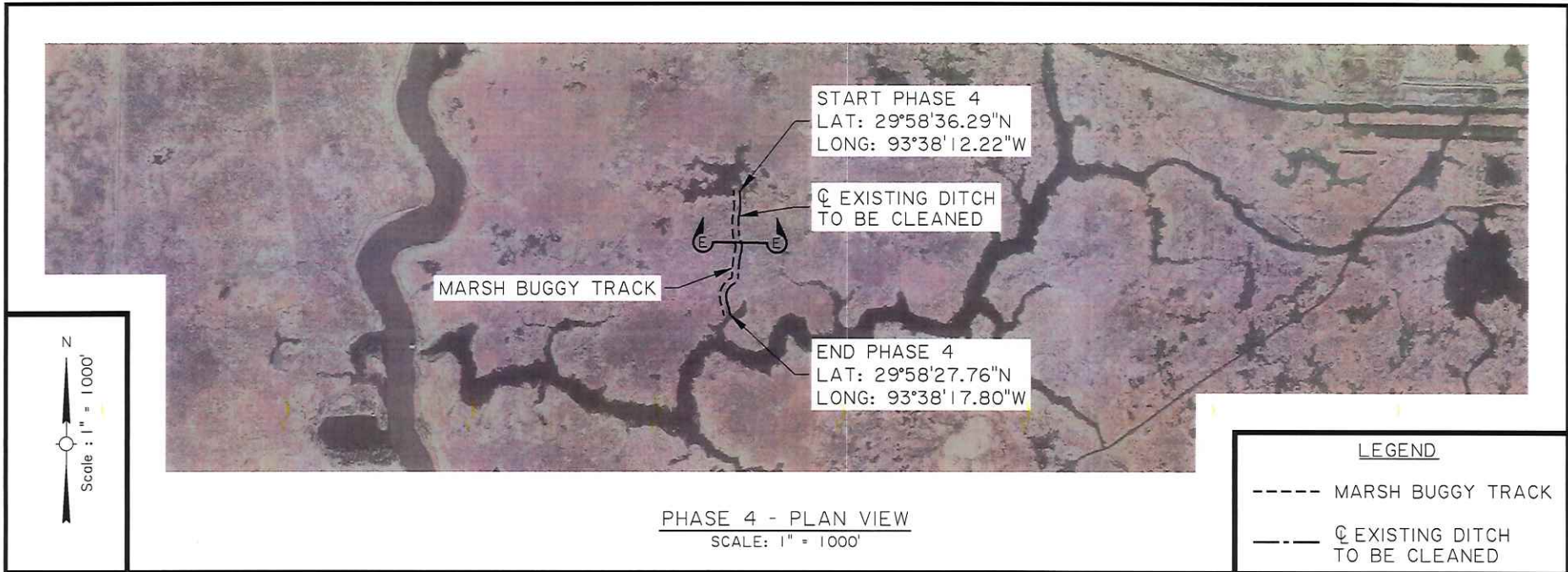
r:\2023\23xxx - pintail alley marsh restoration\7.0 cad\production plan\23XXXC-EX04.dwg



PINTAIL ALLEY DITCH MAINTENANCE
CAMERON PARISH, LOUISIANA
PHASE 3 - SITE PLAN

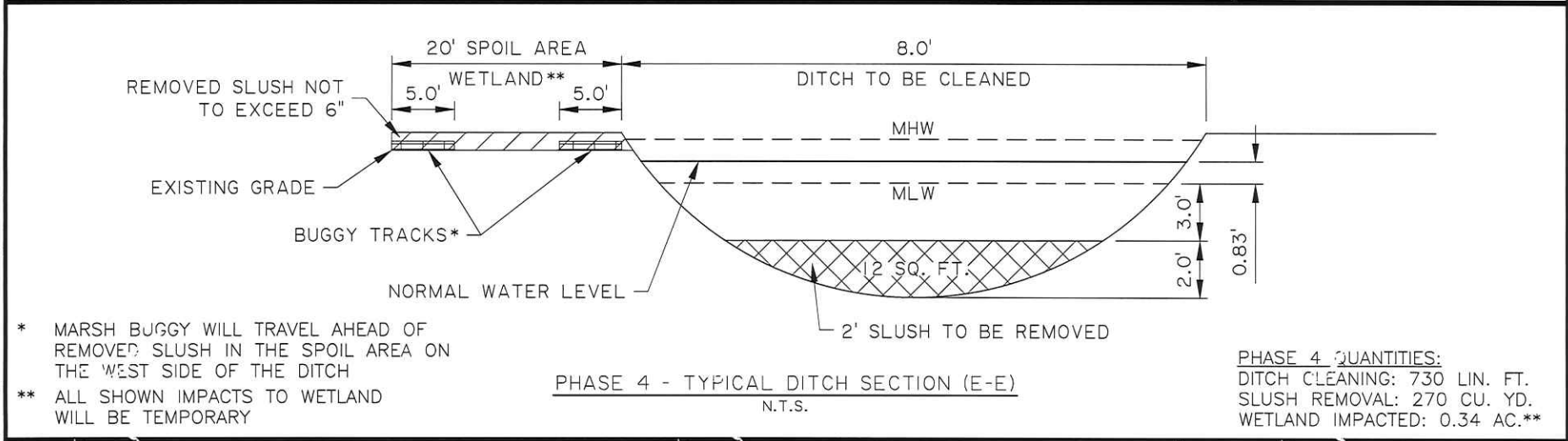
DRAWN:	JBC	DATE:	1/29/24
APPROVED:	RJC		
FIGURE:	5		

r:\2023\23xxxx - pintail alley marsh restoration\7.0 cad\production plan\23XXXX-EX05.dwg



PHASE 4 - PLAN VIEW
SCALE: 1" = 1000'

LEGEND	
-----	MARSH BUGGY TRACK
-----	☉ EXISTING DITCH TO BE CLEANED



PHASE 4 - TYPICAL DITCH SECTION (E-E)
N.T.S.

PHASE 4 QUANTITIES:
DITCH CLEANING: 730 LIN. FT.
SLUSH REMOVAL: 270 CU. YD.
WETLAND IMPACTED: 0.34 AC.**

* MARSH BUGGY WILL TRAVEL AHEAD OF REMOVED SLUSH IN THE SPOIL AREA ON THE WEST SIDE OF THE DITCH
** ALL SHOWN IMPACTS TO WETLAND WILL BE TEMPORARY

PINTAIL ALLEY DITCH MAINTENANCE
CAMERON PARISH, LOUISIANA
PHASE 4 - SITE PLAN

DRAWN: JBC	DATE: 1/29/24
APPROVED: RJC	
FIGURE: 6	

c:\2023\23xxxx - pintail alley marsh restoration\7.0 cad\production plan\23XXXX-EX08.dwg